



# Seattle Cancer Care Alliance

## Fast facts

Seattle Cancer Care Alliance (SCCA) brings together the leading research teams and cancer specialists of **Fred Hutchinson Cancer Research Center, Seattle Children's Hospital** and **UW Medicine** to translate scientific discovery into the prevention, treatment and cure of cancer. We transform groundbreaking research ideas into lifesaving realities for cancer patients, improving the standard of care regionally and beyond.

### National Rankings

- SCCA is recognized as a Best Hospital 2020-21 and No. 1 in Washington State by U.S. News & World Report for 15 years in a row
- Together with Fred Hutchinson, UW Medicine and Seattle Children's, SCCA was the first NCI-designated comprehensive cancer center in the Northwest
- SCCA is a member of the Alliance of Dedicated Cancer Centers (11 ADCC centers)
- SCCA is a member of the National Comprehensive Cancer Network (27 NCCN centers)

### Treatment Centers

SCCA offers two patient housing services — SCCA House and Pete Gross House — and 9 treatment centers:

- Seattle Cancer Care Alliance – South Lake Union, Seattle, WA
- SCCA Hospital at University of Washington Medical Center – Seattle, WA
- Seattle Children's Hospital – Seattle, WA
- UW Medical Center – Northwest Seattle
- SCCA at EvergreenHealth – Kirkland, WA
- SCCA Issaquah – Issaquah, WA
- SCCA Peninsula – Poulsbo, WA
- SCCA at Overlake Medical Center – Bellevue, WA
- Affiliation with SCCA Proton Therapy Center – Seattle, WA

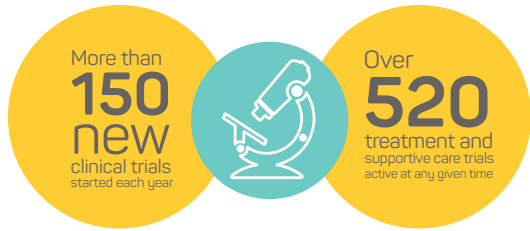
### Innovations

- SCCA excels in treating both common and rare cancers, with higher survival outcomes across all cancers and stages compared to other cases in the National Cancer Database.
- SCCA delivers the highest quality of care through sub-specialized care conferences including the Immunotherapy-Related Adverse Events (IRAE) Tumor Board, Breast Oncology Advanced Molecular Tumor Board, GU Oncology Precision Tumor Board, Supportive Care Interdisciplinary Team Conference and multiple other multidisciplinary tumor boards across diseases.
- SCCA uses the latest in molecular testing and diagnostics to treat every patient with an individualized care plan.
- SCCA and Seattle Children's have established partner High Risk Surveillance Clinics to provide a coordinated approach to prevention and early detection for families with hereditary cancer, one of only a few clinics like it in the nation.

### Global Leadership and Legacy - Bone Marrow Transplantation and Immunotherapy

- Immunotherapy is one of the most significant clinical care advancements of our time. SCCA's doctors and nurses are leaders in this field offering a broad range of immunotherapy options such as checkpoint inhibitors and CAR T cells.
- Research in Bone Marrow Transplantation at Fred Hutch contributed to the development of cellular immunotherapy. SCCA's Bezos Family Immunotherapy clinic facilitates the study of novel cellular immunotherapy approaches in ground breaking clinical trials.
- SCCA was one of the first cancer centers in the nation to offer all three FDA-approved CAR T cell therapies. These therapies are available to treat people living with certain types of blood cancers, including non-Hodgkin's Lymphoma.

## Research by the Numbers



Percentage of all patient billable activity that is driven by research



More than **900** patients enroll in a clinical trial each year

## By the Numbers

### Our People

- 21 Radiation Oncologists
- 21 Surgical Oncologists
- 145 Medical Oncologists/Hematologists
- 177 Advanced Practice Providers
- 1,848 Employees
- 1,873 Affiliates

### Our Numbers

- \$743M FY 2020 Net Revenue
- \$233.3M FY 2020 Research Grants (direct costs)\*

\* Consortium is made up of Fred Hutch, SCCA, Seattle Children's and UW Medicine.

## Affiliate Network

The SCCA network provides community-based physicians with access to the latest cancer diagnostic and treatment information. Patients of SCCA network members have access to clinical research studies, and the ability to easily consult with an SCCA physician about their diagnosis and treatment plans.



### ★ Seattle Cancer Care Alliance

- |   |   |
|---|---|
| <ul style="list-style-type: none"> <li>1 Olympic Medical Center (Sequim, WA)</li> <li>2 Skagit Regional Health (Mount Vernon, WA)</li> <li>3 MultiCare Regional Cancer Center (Tacoma, WA)</li> <li>4 Confluence Health (Wenatchee, WA)</li> <li>5 Kadlec Clinic Hematology &amp; Oncology (Kennewick, WA)</li> </ul> | <ul style="list-style-type: none"> <li>6 Bozeman Health Cancer Center (Bozeman, MT)</li> <li>7 Katmai Oncology Group (Anchorage, AK)</li> <li>8 St. Joseph Regional Medical Center (Lewiston, ID)</li> <li>9 Hawai'i Pacific Health (Honolulu, HI)</li> </ul> |
|---|---|

